



Heart of the Forest Community Special School Newsletter

Family liaison workers:

Alex Newman alex.newman@heartoftheforest.gloucs.sch.uk

Janice Brough janice.brough@heartoftheforest.gloucs.sch.uk

Headteacher: Mrs Stephanie Withington

Deputy Headteacher: Mr Craig Ashby

Chair of Governors: Mr Miles Johanson

Mission

Engage, Enrich and Inspire, together for now and the future

Vision

Create relevant opportunities to build skills and knowledge through an aspirational and personalised curriculum, inspiring meaningful experiences and connections with the wider world

School Value:

Heard

Empowered

Achieving

Respected

Trusted

Safe



Star of The Week goes to:

Class	Child	Reason
Little Apples	Britney	For fantastic interactions with activities all week
Chestnuts	Grace	For engaging with new interventions
Maple	Ruby	Amazing independence this week. Well done!
Maple	Betsy	Incredible ball control in our football lesson this week
Willow	Chase	For being a fantastic team leader all week especially with helping to tidy the classroom
Hazel	Samuel	For being a happy boy in school this week and enjoying all of your lessons
Buzzard	Jacob	For fantastic descriptive writing in English this week
Peregrine	Sam	For using his words more frequently throughout the day. Well done.
Caracara	Emily	For amazing bravery abseiling at adventure sports and for encouraging her friends to take part too
Hobby	Jack	For a great hydrotherapy session this week
Kestrel	Noah	For engaging well with his lessons this week

Vacancy for a Parent Governor at Heart of the Forest

We currently have a vacancy at Heart of the Forest for Parent Governor. If you are interested in this rewarding and valuable role please drop an email to clerk@hofschool.co.uk for more information.



Key dates for your diary:

Half-term February 12th to 16th return to school on Monday 19th February

February 2024 – Black History month

6th February 2024 – Safer Internet Day

28th February Year 8 HPV Vaccinations

7th March – World Book Day

8th March 2024 – International Women's day

15th March Comic Relief/Red Nose Day

Friday 22nd March term ends for Easter Holidays

Monday 8th April return to school



Weekly Class Attendance 22nd to 26th January 2024

Little Apples	85.00%
Chestnuts	95.00%
Maple	87.50%
Willow	76.67%
Hazel	88.89%
Cherry	95.71%
Hobby	92.50%
Buzzard	91.67%
Osprey	84.29%
Caracara	87.50%
Kestrel	76.00%
Goshawk	93.75%
Peregrine	84.00%



Congratulations to Cherry on achieving 95.71% attendance this week



Family Liaison Workers

Reminder to our families we are available at school daily our email addresses are at the top of the newsletter. We also have a 'drop-in session' each week on a Wednesday between 9-10:30am in the Pavilion with tea/coffee.

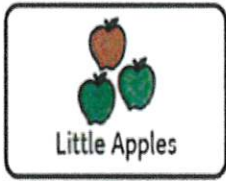
Please see the link below for Gloucestershire family information service they have updated their SEND local offer for families. There are some useful links within their page.

https://www.glofamiliedirectory.org.uk/kb5/gloucs/glofamilies/family.page?familychannel=2_1

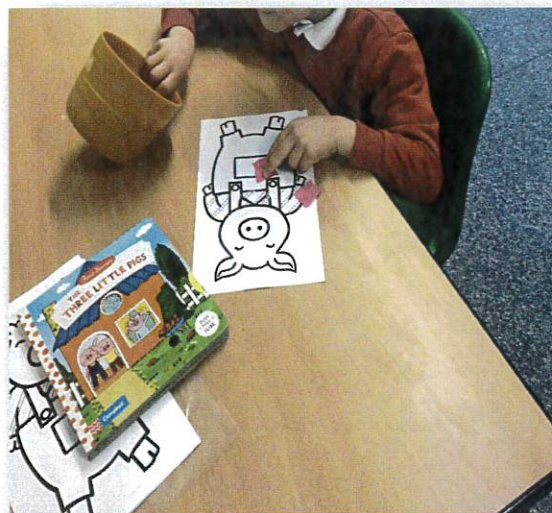
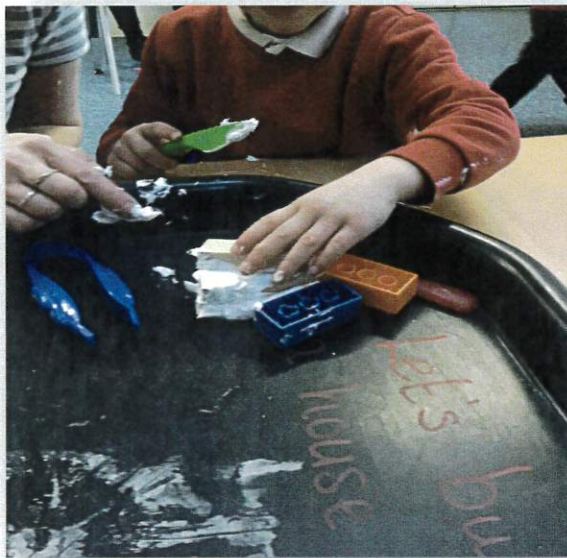
Maths Challenge

This week's maths challenge was to balance the highest value of coins on a floating lemon. It was amazing to see lots of classes getting involved again. The winner (willow) balanced 2 50ps on top of the lemon with the total value of £1 however, a special congratulations to Kestrel who managed to balance a value of 30p in 1ps! Lots of problem solving and addition of money was used this week across the school. 😊





Little Apples have been working hard this term to become more familiar with school routines. Following on from our work in the Autumn term we have continued to enjoy learning about Traditional Tales. This term we have been inspired by the story The Three Little Pigs and have enjoyed exploring elements of this story using our senses. It was great fun to build “brick houses” using shaving foam and wooden blocks. We also started to become familiar with the different characters. Over the coming weeks we will be using role play to help us to sequence the story.



Buzzard News



Buzzard

Over the last term we have all had the opportunity to go climbing as part of our adventure sports. This week was our last week of climbing. Some of us have climbed to the top of the climbing wall, while others have tackled abseiling and climbing a ladder. We have all had a brilliant time and can't wait to find out what activity we will be taking part in next!



PARENT GOVERNORS REQUIRED



Governors



Parent Governors play a vital role on governing bodies, holding the unique position of having a parental viewpoint of the school. Through the children, they have a first-hand experience of the delivery of the curriculum, and the community's point of view. This enables parent governors to bring a different perspective to the strategic management of the school.

Please contact
clerk@hofschool.co.uk for more
information or call 01594 822175

To effectively fulfil the role, parent governors should:

- ✓ Attend four governing body meetings during the year
- ✓ Attend training as necessary
- ✓ Get to know the school
- ✓ Present a balanced view of issues, representing different sections of the community



The Dean Theatre Company

Presents

Sleeping Beauty

A Traditional Family Pantomime

January & February 2024

For more details please see overleaf

Long, long ago and far away, a beautiful baby, Princess Rose was born to King Basil and Queen Camellia. Everyone is celebrating at her Christening party but elsewhere, dark forces are at work.

Deadly Nightshade is so angry that she didn't get an invitation to the Christening that she places a curse on Princess Rose. Can the good Fairies Lilac, Lavender and Lupin save her? Will she find her Prince? ...and will she get true loves kiss?Come along and find out!

Lydney Town Hall, Lydney

Friday 19th January - 7.00pm

Saturday 20th January - 2.00pm & 7.00pm

and Sunday 21st January - 2.00pm



The Larruperz Centre, Ross-on-Wye

Friday 2nd February - 7.00pm

Saturday 3rd February - 2.00pm & 7.00pm

Sunday 4th February - 2.00pm



Scan Me For Tickets

Tickets from £9.50

www.the deantheatrecompany.com

or call the Box Office Help Line

07942 281494

Written by Bradford & Webster.

This amateur production is by arrangement with NODA Ltd.



Be inspired by amateur theatre



PLAY GLOUCESTERSHIRE'S PLAY RANGERS

**The Recreation Ground,
Ruspidge
GL14 3AE**



what3words

[///grapevine.runs.wool](http://grapevine.runs.wool)

**Tuesday 13th February
10am to 4pm**

With thanks to Gloucestershire County Council's Levelling Up Together Fund

**Levelling up
together**

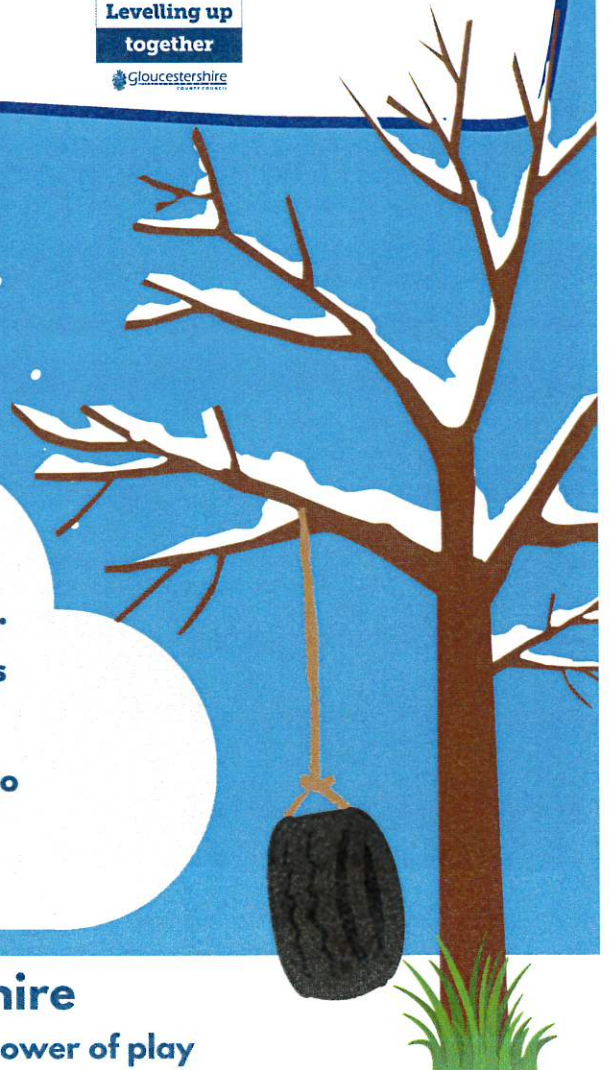
Gloucestershire
COUNCIL



Our Play Ranger activities take place outdoors in all weathers and are open access. This means there is no registration, children are free to come & go as they please.

Our Activities are aimed at school aged children. Under 8's are welcome and should be accompanied by an adult.

We believe all children have the right to play. Please talk to us if your child needs additional mobility or other support to enjoy Play Rangers.



Play Gloucestershire

Transforming lives through the power of play
www.playgloucestershire.org.uk

 @play_glos   playgloucestershire