



## Heart of the Forest Community Special School Newsletter

### Family liaison workers:

Alex Newman [alex.newman@heartoftheforest.gloucs.sch.uk](mailto:alex.newman@heartoftheforest.gloucs.sch.uk)

Janice Brough [janice.brough@heartoftheforest.gloucs.sch.uk](mailto:janice.brough@heartoftheforest.gloucs.sch.uk)

Headteacher: Mrs Stephanie Withington

Deputy Headteacher: Mr Craig Ashby

Chair of Governors: Mr Miles Johanson

### Mission

Engage, Enrich and Inspire, together for now and the future

### Vision

Create relevant opportunities to build skills and knowledge through an aspirational and personalised curriculum, inspiring meaningful experiences and connections with the wider world

### School Value:

Heard

Empowered

Achieving

Respected

Trusted

Safe

Star of The Week goes to:



Class	Child	Reason
Little Apples	Evie-Mae	For really engaging in forest school activities yesterday, she especially loved the storytime.
Chestnuts	Zachariah	For being a great friend and always welcoming everyone to the classroom with a smile! ☺
Maple	Isaac	For settling in so well to Maple class during the mornings this week.
Willow	Teddy	For helping his younger peers transition to class, that was very kind.
	Lacey	For fantastic work in Maths and PE! Well done Lacey for trying your best!
Hazel	Kabir	For persevering and successfully riding a bike! ☺
Peregrine	Libby	For her continuous engagement in lessons and for being so helpful and polite to all staff and peers.
Osprey	Ruben	Ruben has produced excellent colourful semantics this week – well done Ruben – we are very proud of you!
	Dylan	Dylan has showed us excellent us of his talker well this week – well done Dylan – we are super proud of you!
Kestrel	Keiramy, Emma, Carter	For their hardwork in Maths today!
Caracara	Jessica	For amazing engagement and recall of multiplication facts of 4 up to 16. Well done Jess! ☺
Buzzard	Harry	For aspiration in his writing and communication skills. TERRIFIC!!!
Hobby	Ellie	Well Done Ellie, This week you worked hard during our Cognition session, using your own hands to explore.
Cherry	Oscar	For remembering to take your communication device around school with you this week
Goshawk	Kane	For fantastic engagement during lessons this week.
Forest School	Bonnie	For working well to add to the dead hedge habitat for wildlife

Polite Reminder to parents

If you arrive at the school gates after 9am or 3pm please do not pull up in front of the gates, please could you pull into one of our laybys and await all traffic to exit the school grounds.

Thank you. 😊



**Key dates for your diary:**

Monday 6<sup>th</sup> May – Bank Holiday

Monday 6<sup>th</sup> May – Deaf Awareness Week

Monday – Mental Health Awareness Week

Friday 24<sup>th</sup> May - Pied Piper Appeal Pyjama Day

**FREDPLUS  
FOREST EASY READ DEAL**

FRED+ is a FREE service for people who live in the Forest of Dean and surrounding area and would like to improve their reading and early writing skills. This is a free one-to-one (not classes) service that is confidential and not connected to the school in any way, some of the services they offer are:

- Applying for jobs
- Helping children and grandchildren with their learning
- Joining in with social activities and community life

More information is available on their website [www.forestreadeasydeals.org.uk](http://www.forestreadeasydeals.org.uk)



### Summer term Class Attendance 22nd to 26th April 2024

Little Apples	83.33%
Chestnuts	75.83%
Maple	82.50%
Willow	88.35%
Hazel	88.89%
Cherry	84.29%
Hobby	92.50%
Buzzard	96.36%
Osprey	84.29%
Caracara	83.33%
Kestrel	83.00%
Goshawk	90.00%
Peregrine	88.00%



Congratulations to Buzzard with 96.36% you are this weeks attendance winners!!



### Family Liaison Workers

Reminder to our families we are available at school daily our email addresses are at the top of the newsletter. We also have a 'drop-in session' each week on a Wednesday between 9-10:30am in the Conference room within school tea/coffee will be available.

Please see the link below for Gloucestershire family information service they have updated their SEND local offer for families. There are some useful links within their page.

<https://www.glosfamiliesdirectory.org.uk/kb5/gloucs/glosfamilies/family.page?familychannel=2>





**Thank you!**

Massive thank you to all parents at pick up time this week, thank you for being so kind and understanding. We really do appreciate it.



Friends of Heart of the Forest Summer Fete will be taking place on Saturday 29<sup>th</sup> June 2024 starting at 1.00 pm on our school field.

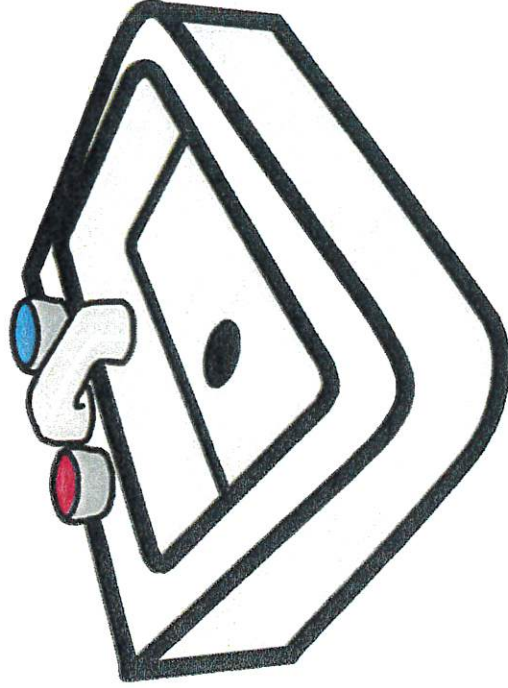
We are busy behind the scenes booking stalls for our exciting afternoon with you, do you, family or friends like to run stalls? If they do, please contact Karin in Reception on [Karin.haywood@hofschool.co.uk](mailto:Karin.haywood@hofschool.co.uk), we would love to hear from you.

## TAG Rugby

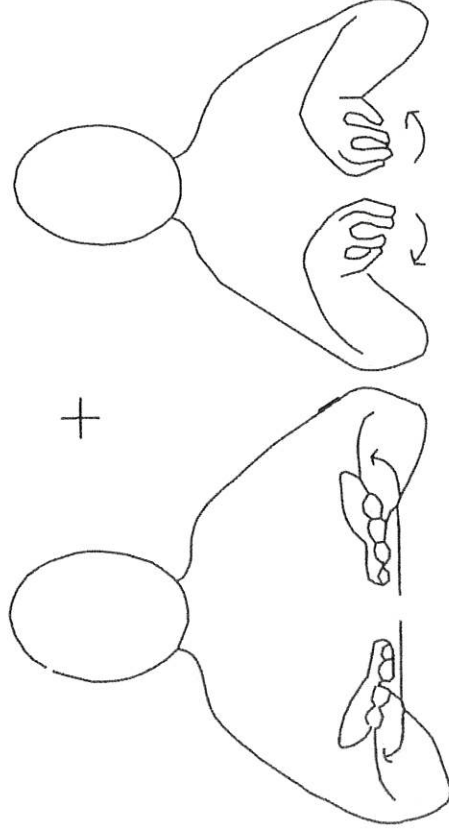
Congratulation to HoF Rugby team for winning a Best Sportsmanship award at this week's tournament. Well done to Jordan and his team.



## Sign of the Week 29th April



Sink



Sink





**HARTPURY**  
COLLEGE

This Certificate is awarded to

*Hart of the Coast*

For displaying the RFU value

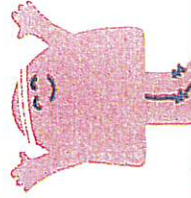
**Sportsmanship**

In an exemplary manner at YuGo SEND Tag Festival 2024

@Hartpury College



TEAMWORK RESPECT ENJOYMENT DISCIPLINE SPORTSMANSHIP



# Forest of Dean Community Hospital

Opening May 2024

## Services at the hospital will include:

- Minor Injury and Illness Unit
- X-ray and Ultrasound
- Inpatient ward with 24 beds
- Therapy Department
- Separate outpatient departments for children and adults
- Complex Leg Wound Service
- Community dental service for people with specific needs
- Rapid Response – a service to support unwell people in their own homes
- Other community teams, including community midwifery

**There will be a phased opening of services so please check our website for exact dates.**

## Frequently Asked Questions

### **Will I be charged to park when visiting the hospital?**

No, parking at the hospital will be free for staff and visitors.

### **What are the Minor Injuries and Illness Unit opening hours?**

Our Minor Injury and Illness Unit (MIU) will be open between 8am and 8pm, seven days a week.



## What sort of things can be treated at the Minor Injuries and Illness Unit?

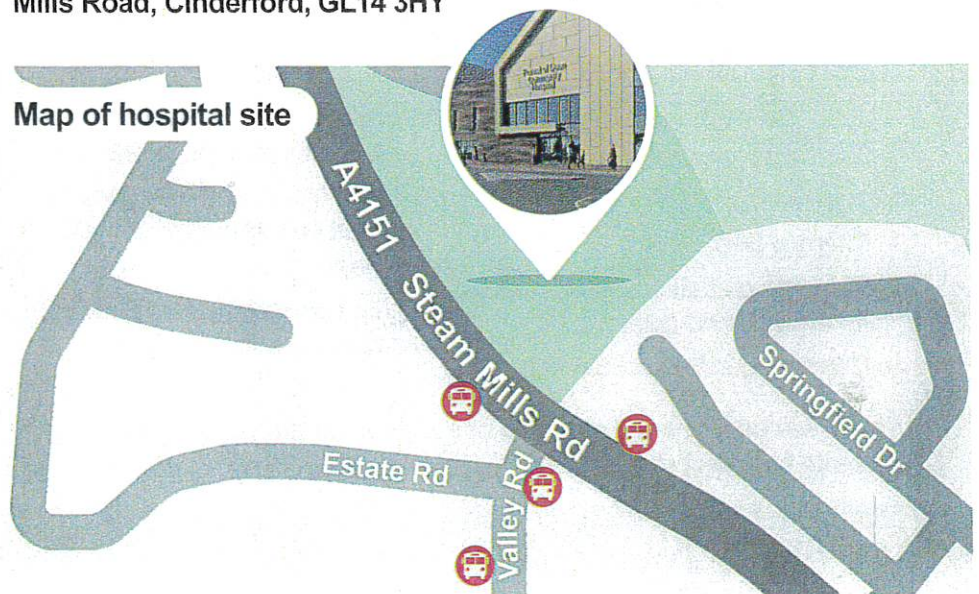
You can get help for a variety of new or urgent minor injuries or illnesses:

- sprains
- minor fractures
- wounds and burns
- ear ache
- sore throats
- skin problems, and more

If you require advice for ongoing GP care, support after a procedure such as an operation or to manage your long term conditions please continue to contact your GP. If you are unsure which services you require, contact **NHS 111**. You must contact **999** with an emergency, including chest pain and any serious injuries or illnesses, or anything you may consider to be life threatening.

## Finding the hospital

The hospital's address is: **Forest of Dean Community Hospital, Steam Mills Road, Cinderford, GL14 3HY**



For more information visit:

 [www.ghc.nhs.uk](http://www.ghc.nhs.uk)

 [instagram.com/GlosHealthNHS](https://www.instagram.com/GlosHealthNHS)

 [twitter.com/GlosHealthNHS](https://twitter.com/GlosHealthNHS)

 [facebook.com/GlosHealthNHS](https://facebook.com/GlosHealthNHS)

working together | always improving | respectful and kind | making a difference

## Introduction to Mosaics



Join us on this 2-hour workshop and discover the joy  
of creating a mosaic masterpiece.

**Monday 29<sup>th</sup> April 2024**

**1.00pm – 3.00pm**

River Childrens Centre, Naas Lane,  
Lydney, GL15 5AU

To book a place, or for more information, please contact

Adult Education:

Tel. 01452 583452 / 07748 933849

or email: [karen.stiles@gloucestershire.gov.uk](mailto:karen.stiles@gloucestershire.gov.uk)

Free subject to eligibility. There may be a cost for people in work. \*Learners must be over the age of 19 and a UK/EEU resident in the last 3 years. Learner must be one of the following: Unemployed/earning below £20,319.00 /retired; Learning disability; Mental health difficulty; qualified below a level 2 (less than 5 GCSES).



THE  
SEALED  KNOT  
PRESENTS

# SECURING THE SHIRE

A CIVIL WAR BATTLE FOR THE ROUTES THROUGH HEREFORDSHIRE

RYE MEADOWS, MUCH MARCLE

MAY 5<sup>TH</sup> & 6<sup>TH</sup> 2024

ENTRY ONLY £15 PER FAMILY

PRICE INCLUDES 2 ADULTS AND 3 CHILDREN

USUAL PRICE £5 PER ADULT, £3 CONCESSIONS

OPEN 10<sup>AM</sup> TIL 4<sup>PM</sup>

FOR TICKETS VISIT

THESEALEDKNOT.ORG.UK

INCLUDING:

INTERACTIVE LIVING HISTORY  
AND 17TH CENTURY CAMP

BEER TENT AND STALLS

BATTLE RE-ENACTMENT



With  
The Ball

CheerDance

Dream, Believe, Inspire

We are not just a team, we are a family!

4 - 16 year olds

Tumbles, Dance, Stunting & more

Performance opportunities

No experience Required

Enthusiastic and Encouraging

3 venues

Join the CheerDance family today!

Book your FREE  
Trial Session Here!



| withtheball.co.uk | laurastorey@withtheball.co.uk | 07842821013 |



# COLEFORD'S GIANT EUROVISION WATCH PARTY

Saturday 11th May

from 8pm at

Studio Cinema,

High Street, Coleford.

**FREE TICKETS**

*for residents with a **GL16** postcode*

**Tickets MUST be collected in person between 11am and 1pm  
on Saturday 27th April from Studio Cinema**  
*(proof of address will be required).*

Let's come together and show Coleford's support for

**Olly Alexander**

**(official UK entry '24)**



This event has been kindly sponsored by Coleford Town Council